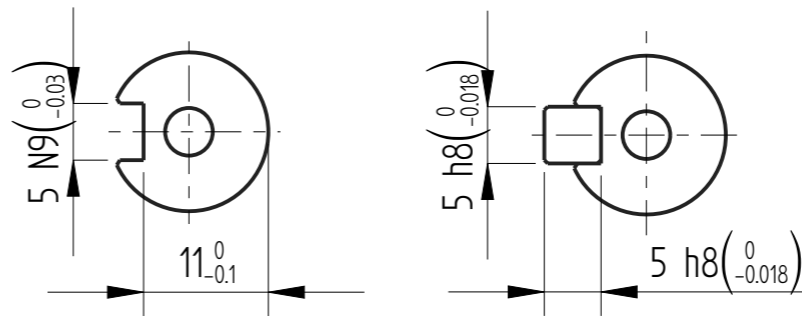
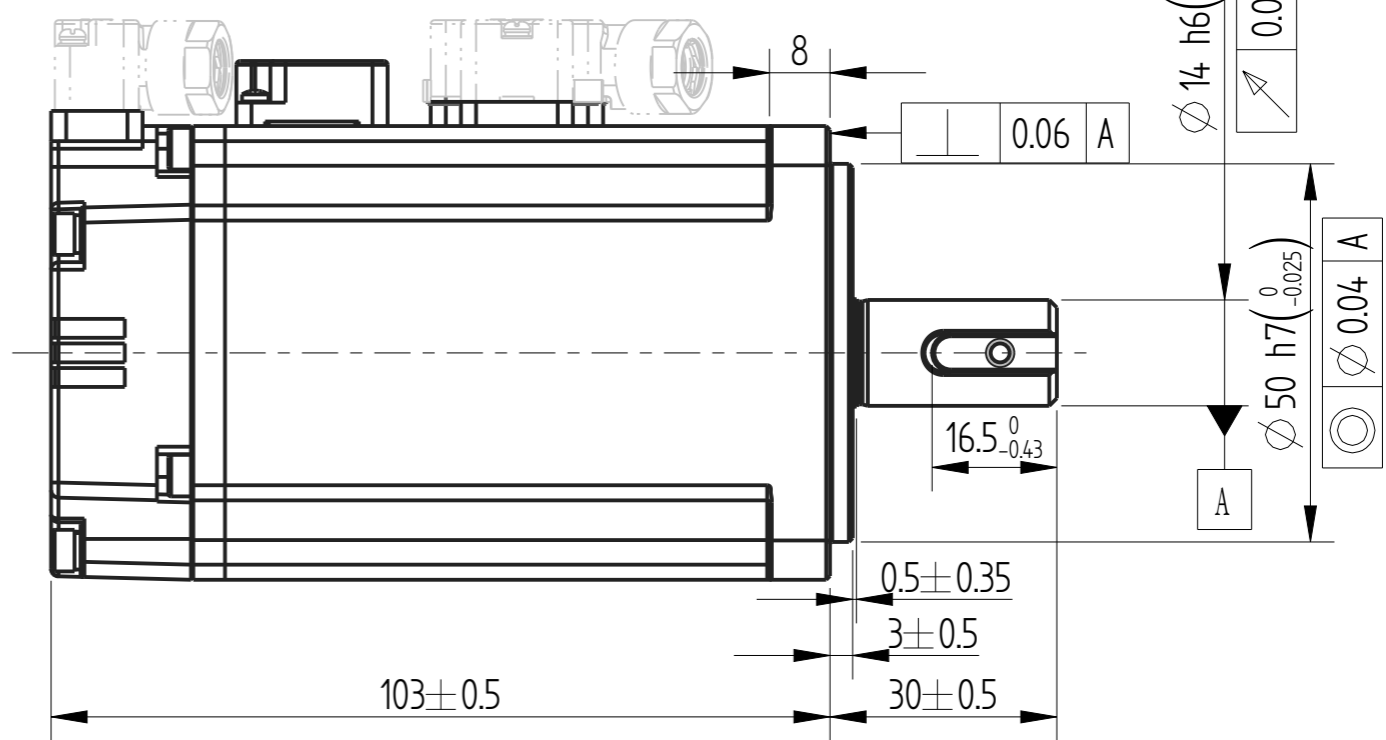
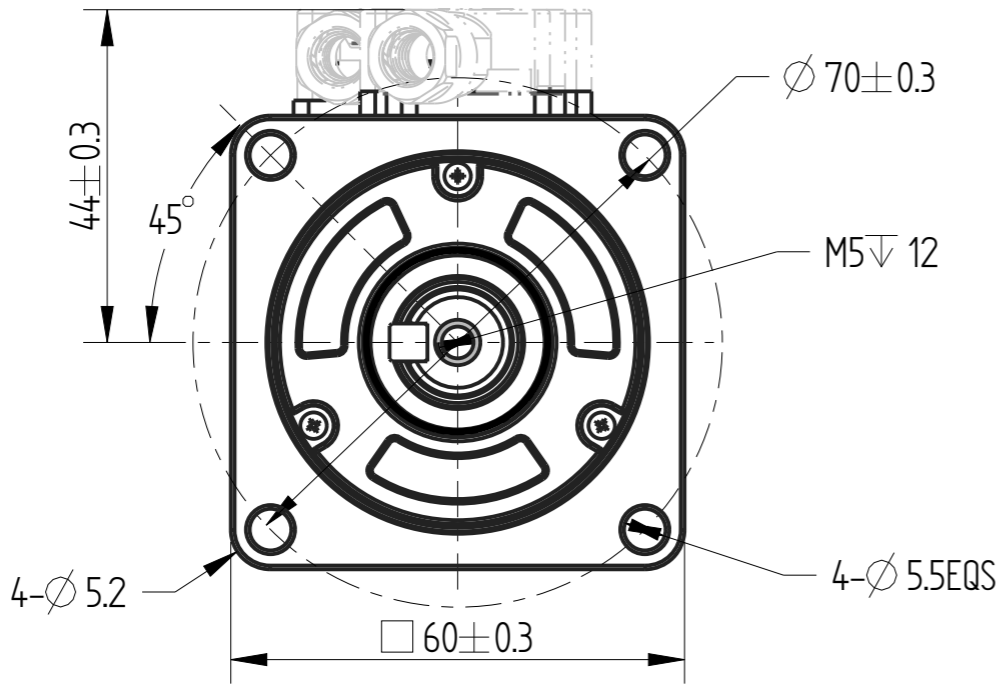


正样
2024.05.08
B01

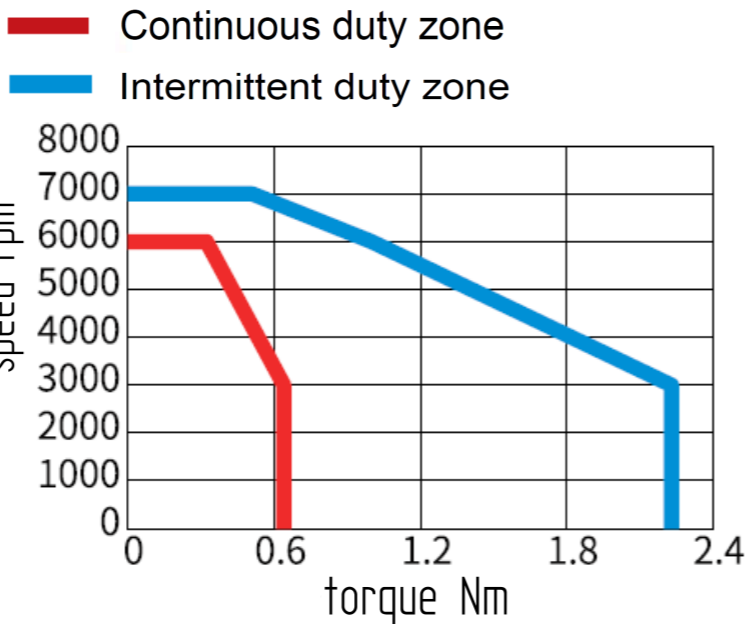
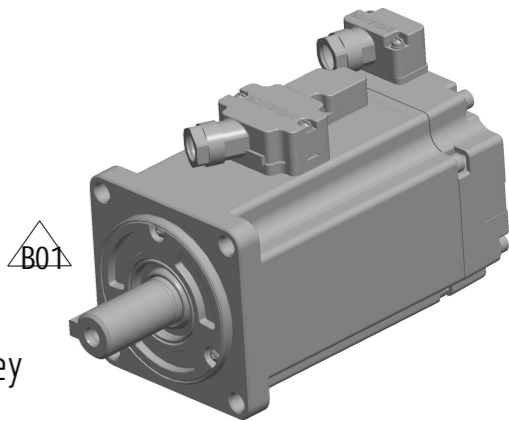
外部公开


Copyright:Copyright infringement reserved.



Dimension of shaft end

Dimension of shaft end with key



| | | | | | | | | |
|-----------------|---------------|-----------|----------|-----------------------|-------|---------|-------------|---|
| | | | | Motor outline drawing | | | 01118297-WX | |
| B01 | Replace | / | 20240508 | | | | | |
| B00 | New Archive | / | 20230829 | | | | | |
| Version | Change method | Change by | Date | | | | | |
| Design | / | | | / | | | Mark |  |
| Check | / | | | | | | | |
| Craft | / | | | | | | | |
| Verify | / | | | Weight | Scale | Version | Page 1 of 1 | |
| Standardization | / | | | / | 1:1 | B01 | Model | MS1H1-20B30CB-A634R-INT |
| Approve | / | | | | | | | |

| Basic function parameters | |
|----------------------------------|----------|
| Rated power KW | 0.2 |
| Rated voltage V | 220 |
| Rated current A | 1.5 |
| Peak current at rated speed A | 5.8 |
| Rated torque Nm | 0.64 |
| Peak torque at rated speed Nm | 2.24 |
| Rated speed rpm | 3000 |
| Max speed rpm | 7000 |
| Rotor inertia kg·cm ² | 0.106 |
| Encoder resolution | 26bit |
| Insulation class | F |
| Protection Level | IP67 |
| Static torque of brake Nm | ≥15 |
| Brake power supply | DC24±10% |
| Duty cycle | S1 |
| Radial line load N | ≤245 |
| Axial load N | ≤74 |

INOVANCE